



PACK™ SERIES

Hazardous Area Wall-pack Lighting

The Pack light is designed to meet the specific requirements for safe operation in hazardous areas. These areas are defined as locations where flammable gases, vapors, or dust are present in quantities sufficient to pose a risk of explosion or fire.

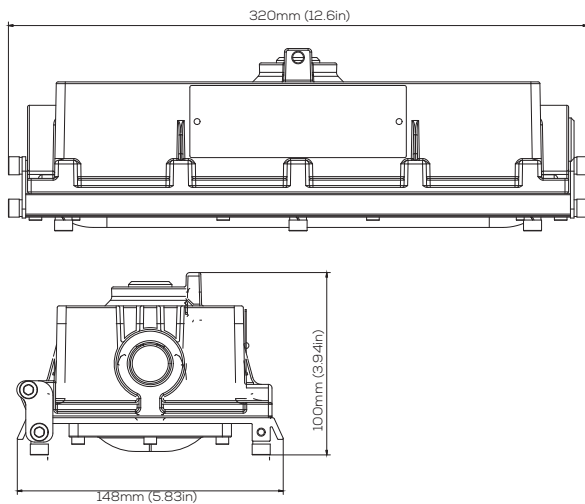
Compliance

NEC/CEC Standard
UL 844 Hazardous Locations
Class I Division 2, Group A, B, C, D
Class II Division 1, Group E, F, G
Class II Division 2, Group F, G
Class III
Class I, Zone 2, Group IIC

CSA C22.2 No.137
CSA C22.2 No.250.0:21
UL 1598 Wet Locations
UL 1598A Marine Outside Type (Salt Water)
UL 8750 LED Safety
FCC
IP66/67 | IK10 | 5G | NEMA4X

Dimensions

unit: mm(in)



Warranty

10-year limited system warranty
Lumen Maintenance: L70 > 150,000 hours @ 25°C

Technical Data

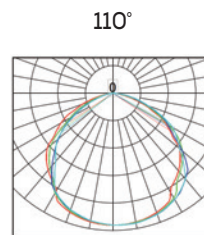
Electrical	
Rated Power	20W / 30W
Input Voltage	100-277V/AC
Input Frequency	50/60Hz
Power Factor	> 0.95
Driver Efficiency	≥ 90%
DC output Ripple & Noise	< 200mVP-P

Optical	
Lumen Output	3,300lm / 4,950lm
Luminous Efficacy (Lumens per Watt)	165 lm/W
Beam Angle	110°
Correlated Color Temperature (CCT)	3000K 4000K 5000K
CRI	Ra>70

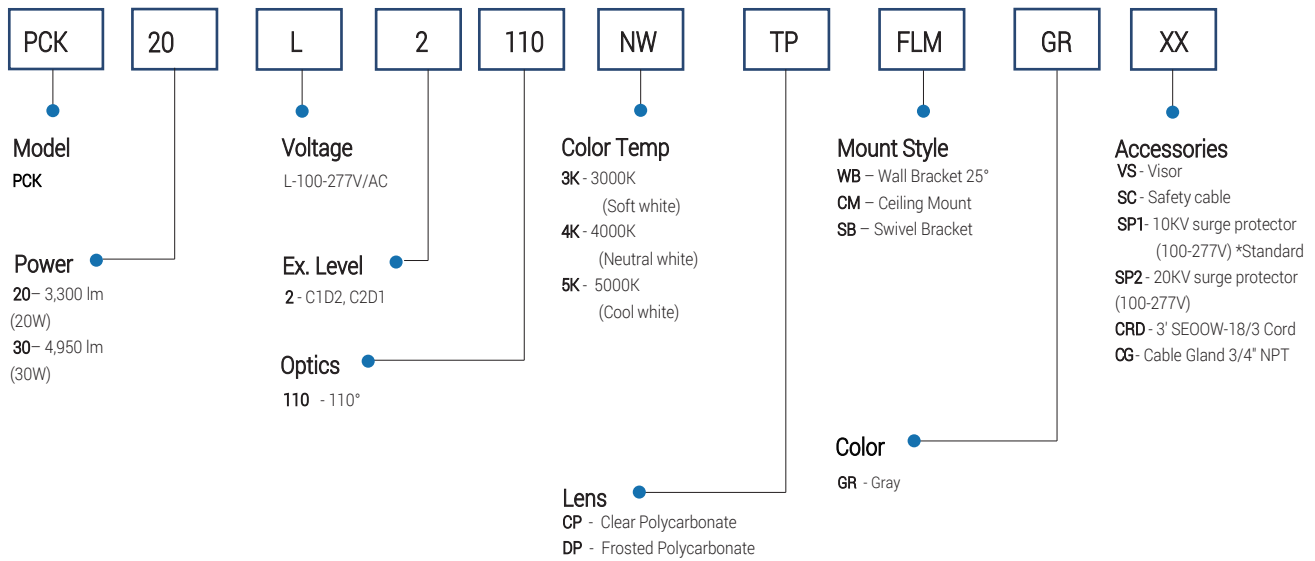
Environmental	
Ambient Operating Temperature	-40°C~+65°C
Ambient Operating Humidity	10%~90% RH
Atmospheric pressure	86~106KPa

Technical	
Lens Material	Polycarbonate
Mounting Options	Wall mount / Ceiling mount
Cable Entry	3/4" NPT
Net Weight	2.7kg (5.95lbs)

Beam Distribution



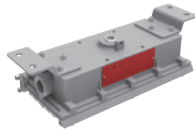
Ordering Information and Mounting Accessories



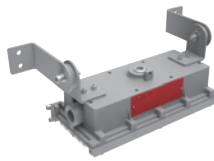
Mounting Options



WB
Wall bracket 25°



CM
Ceiling mount



SB
Wall Swivel Bracket

Accessories



WB
Wall Bracket
Mount Kit 1 pair



CM
Ceiling Mount Kit 1 pair



SB
Wall Swivel Bracket



VS
Stainless steel
visor



SC
Stainless steel
safety cable
Ø6 (3mm)



CRD
3' SE00W-18/3 Cord
(Factory installed)



CRD
Cable Gland
3/4" NPT
Suitable for C1D2



SP1
10KV Surge Protector
(100-277V)
*Standard



SP2
20KV Surge Protector
(100-277V)